

Ultrasound Equipment and Consumables



Parker Laboratories, Inc.

Products by Parker Laboratories

Sterile Aquasonic® 100

Ultrasound Transmission Gel

World Standard for Sterile ultrasound gel. STERILE AQUASONIC® 100 is the recommended for diagnostic and therapeutic ultrasound applications when sterility is indicated.



Features

- Overwrapped, sterilised foil pouches
- Acoustically correct for the broad range of frequencies used in medical ultrasound
- Non-irritating, hypoallergenic
- Completely aqueous, will not stain clothing or damage equipment
- Not a spermicide

| Cat Number | Description | Unit |
|------------|---|--------|
| PKR01-01 | 20g over wrapped, sterilised foil pouches | 48/box |

Aquasonic 100[®]

Ultrasound Transmission Gel

World Standard for Medical Ultrasound Transmission, Aquasonic 100[®] is the widely used gel for diagnostic therapeutic medical ultrasound. Recommended for all procedures where a viscous gel is required.



Features

- Acoustically correct for the broad range of frequencies used
- Completely aqueous, will not stain clothing or damage transducers
- Unique "can't be copied" formula is hypoallergenic, bacteriostatic, non-sensitising and non-irritating
- No formaldehyde
- Not a spermicide
- Used and recommended by leading manufacturers of medical ultrasound equipment worldwide

| Cat Number | Description | Unit |
|------------|---|---------------|
| PKR01-08 | 250mL bottle | 12/Box |
| PKR01-50 | 5 L SONICPAC [®] with refillable dispenser | Each or 4/Cse |
| PKR01-02 | 60mL | 12/Box |

Aquasonic Clear[®] Ultrasound Gel

CLEAR ultrasound gel. Based on the same "can't be copied" formula of the World Standard, Aquasonic[®] 100 Ultrasound Transmission Gel, without fragrance or colour. For diagnostic and therapeutic medical ultrasound procedures.



Features

- No fragrance or colour
- Acoustically correct for the broad range of frequencies used
- Hypoallergenic, bacteriostatic, non-irritating
- Water soluble
- No formaldehyde
- Not a spermicide

| Cat Number | Description | Unit |
|------------|--|---------------|
| PKR03-08 | 250mL dispenser | 12/Box |
| PKR03-50 | 5 liter SONICPAC [®] with dispenser | Each or 4/Cse |

Scan[®] Ultrasound Gel

Our exclusive dual-viscosity formula allows Scan[®] to be applied as a gel and scanned as a fluid. For medical ultrasound procedures when a less viscous gel is desired.



Features:

- Acoustically correct, provides superior transmission of ultrasound waves
- Completely aqueous, will not stain clothing, damage equipment or irritate skin
- Used and recommended by leading manufacturers of ultrasound equipment worldwide
- Hypoallergenic, bacteriostatic
- No formaldehyde

| Cat Number | Description |
|------------|---|
| PKR11-28S | Contains: 4 gallons Scan [®] gel; 2 refillable dispensers and 1 pump |

Eclipse[®] Probe Cover – Latex Free

A soft, latex-free, disposable probe cover for medical ultrasound probes/transducers, pre-gelled inside with Aquasonic[®] 100 Ultrasound Transmission Gel. Fits most endocavity ultrasound probes.



Features

- Pre-gelled inside with Aquasonic[®] 100 Ultrasound Transmission Gel
- Latex-free
- Non-irritating,
- Non-sensitizing
- Only one probe cover is required for each procedure



HINT:
Fits most endocavity ultrasound probes

| Cat Number | Description | Unit |
|------------|-----------------------------------|---------|
| PKR38-01 | Probe cover (64mm x 44mm x 241mm) | 100/Box |

Aquaflex[®] Ultrasound Gel Pad

A 2cm x 9cm aqueous, flexible, disposable ultrasound standoff for use in difficult to visualize and near field areas, or when gels alone won't do. Disposability eliminates the risk of cross contamination in diagnostic and therapeutic ultrasound procedures.



Features:

- Requires no gel, except in prolonged procedures
- Requires only gentle, even pressure
- Disposable
- Cushions sensitive areas
- Hypoallergenic, Bacteriostatic
- Easy to use

| Cat Number | Description | Unit |
|------------|-------------------|-------|
| PKR004-02 | 2cm x 9cm gel pad | 6/Box |

Transeptic[®] Cleaning Solution

Multi-purpose spray for professional use when cleansing ultrasound transducer/probe surfaces between procedures. Does not cause transducer membrane swelling.



Features

- Convenient clear spray dispenser
- Does not contain phenol or glutaraldehyde
- Accepted for use by manufacturers of ultrasound equipment



HINT: Does not cause transducer membrane swelling.

| Cat Number | Description | Unit |
|------------|---------------------------|--------|
| PKR09-25 | 250 mL clear spray bottle | 12/box |

Spectra® 360 Electrode Gel

The only salt free and chloride-free electrically conductive gel, recommended for all electromedical procedures. Salt-free characteristics make it particularly suitable for long-term applications. Spectra 360 differs significantly from all other electrically conductive media...it works by wetting the skin, thereby reducing skin resistance.



Features

- Non-gritty STAY-WET® formula allows for prolonged use without re-application
- Non-irritating, hypoallergenic, bacteriostatic
- Salt-free, no sodium ion transfer
- Product of choice for conductive rubber and/or carbon electrodes



Hint:
Product of choice for ECG, TENS, monitoring and pediatrics

| Cat Number | Description | Unit |
|------------|-------------|--------|
| PKR12-02 | 60g tube | 12/Box |
| PKR12-08 | 250g tube | 12/Box |

Signa gel® Electrode Gel

Highly conductive, multi-purpose electrolyte meets all the standards of the ideal saline electrode gel. Recommended for ECG, defibrillation, biofeedback and EMG.



Features

- Highly conductive
- Hypoallergenic, bacteriostatic
- See-thru tube with stand-up cap lets you know how much Signa gel® is left
- Water soluble, non-staining, non-gritty



HINT:
Suitable for all ECG, EMG, defibrillation and biofeedback applications

| Cat Number | Description | Unit |
|------------|-------------|--------|
| PKR15-25 | 250g tube | 12/Box |
| PKR15-60 | 60g tube | 12/Box |

Signacreme® Electrode Cream

Electrode Solution and Skin Prep

Highly conductive cream electrolyte for use in electromedical procedures where a cosmetic quality cream is preferred.



Features

- Cosmetic quality, pleasing to patients
- Non-irritating, hypoallergenic, bacteriostatic
- Conveniently packaged in refillable see-thru dispenser with flip-top cap

| Cat Number | Description | Unit |
|------------|-------------|--------|
| PKR17-05 | 142g bottle | 12/Box |

Signaspray®

Highly conductive, economical spray electrolyte and non-gritty skin prep.



Features

- Superior non-gritty skin prep
- Bacteriostatic, hypoallergenic, non-staining
- No residue build-up
- Easy to apply, easy to clean up
- Clear bottle lets you know how much SIGNASPRAY® is left



HINT:
ideal electrolyte
for use with
muscle
stimulation
equipment

| Cat Number | Description | Unit |
|------------|---|--------|
| PKR18-25 | 250 mL (8.5 fl. oz.) clear spray dispenser bottle | 12/Box |

Tensive® Conductive Adhesive Gel

Safe, non-flammable, odourless, conductive, adhesive gel. Recommended for TENS, EMG, EEG and other electromedical procedures.



Features

- Eliminates tape and tape irritation
- Non-flammable, no solvent odour
- Hypoallergenic, bacteriostatic, non-irritating
- Water soluble easily removed with water
- Best adhesive gel available



HINT:
Immediate
conduction - no
waiting time

| Cat Number | Description | Unit |
|------------|-------------|--------|
| PKR22-60 | 50g tube | 12/Box |

Aquagel® Lubricating Gel

Clear, water-soluble, non-irritating lubricant. Compatible with natural and synthetic substances. The international choice for a non-sterile lubricating gel.



Features

- Non-runny, viscous gel
- Hypoallergenic, bacteriostatic
- Not a contraceptive
- For hospital, medical and personal use
- Convenient flip cap

| Cat # | Description | Unit |
|----------|---------------|--------|
| PKR57-05 | 142 gram tube | 20/Box |

Thermasonic® Gel Warmer

The newly designed Thermasonic® gel warmer warms ultrasound gel to body temperature and is available in both a single bottle and three-bottle design for improved flexibility. The unit may also be wall mounted for easy access.



Features

- Heat indicator lamp
- Warms entire bottle uniformly
- Maintains constant temperature
- Designed for continual use
- Low electrical demand
- High density impact-resistant composite
- Hospital grade plug and power cord
- UL and CSA listed

In addition the three bottle gel warmer also offers:

- Adjustable three-position thermostat
- Illuminated power ON/Off switch

| Cat # | Description |
|----------------|--------------------------|
| PKR82-01-20 CE | Single-bottle gel warmer |
| PKR82-03-20 CE | Triple-bottle gel warmer |

Other Ultrasound Consumables

| Catalogue Number | Description | Unit |
|------------------|--|---------|
| JCMUSRSONARAIDS | Sonar aid 13 x 12 x 1 cm | 2/Box |
| PHL610-002 | Civco 14 x 61 cm sterile probe covers | 24/Box |
| PHL610-004 | Civco 17.8 x 61 cm sterile latex free probe covers | 24/Box |
| PHL610-208 | Civco 15.3 x 83.8 cm latex free sterile probe covers | 24/Box |
| PHL610-249 | Non-sterile 3.5 x 20 cm civco rolled probe covers | 100/Box |
| PHL613-245 | Disposable C9-5-ICT biopsy guide | 24/Box |
| AMDCARD | Cardiac ultrasound table | Each |
| BDX058-705 | Ultrapro ultrasound table 240v 50Hz single phase w/058-632 folding side rails, 058-651 retractable stirrups, 058-656 IV pole | Each |

Redux® Electrolyte Gel

Non-abrasive, water-based gel for routine ECG and defibrillation.



Features:

- Highly conductive
- Water soluble
- Non-staining
- Non-gritty

| Cat Number | Description | Unit |
|------------|------------------|--------|
| PKR65-04 | 114g (4oz.) tube | 10/Box |

Redux® Electrolyte Creme

For routine ECG.



Features:

- Highly conductive electrode cream
- Cosmetic quality is pleasing to patients
- Non-irritating

| Cat Number | Description | Unit |
|------------|------------------|--------|
| PKR66-04 | 114g (4oz.) tube | 10/Box |

Redux® Electrolyte Paste

Water-based, abrasive gel for short term monitoring, ECG and defibrillation.



Features:

- Highly conductive
- Water soluble

| Cat Number | Description | Unit |
|------------|------------------|--------|
| PKR67-05 | 142g (4oz.) tube | 10/Box |

Ultrasound Tables, Chairs & Accessories

ELITE ASTER Patient Table

The ELITE Aster has been designed to offer greater rigidity than the existing standard range of treatment tables. Even at its maximum height the table offers a rigid platform for both the patient and sonographer. Nylon bearings allow for quiet, maintenance free operation ensuring long lasting durability for the table. Quality Actuators and Gas Struts make adjusting the position of the table easy and accurate and the construction allows for a wide range of operating heights. Retractable castors and nylon wheels allow for easy movement of the table within the clinic.

The Elite Aster also features a new "Surround Elevating Bar". This wrap around bar allows the practitioner to activate the height adjustment of the table from any position around the table. There is no longer a need to have a separate footswitch that requires to be moved from one side to the other.



New
"Surrounding
Elevating Bar" for
easy table height
adjustment



| Cat Number | Description | Unit |
|------------------|---|------|
| AMDMETELITEASTER | ELITE ASTER Patient Table (30 day warranty) | Each |

Ergonomic Ultrasound Solutions

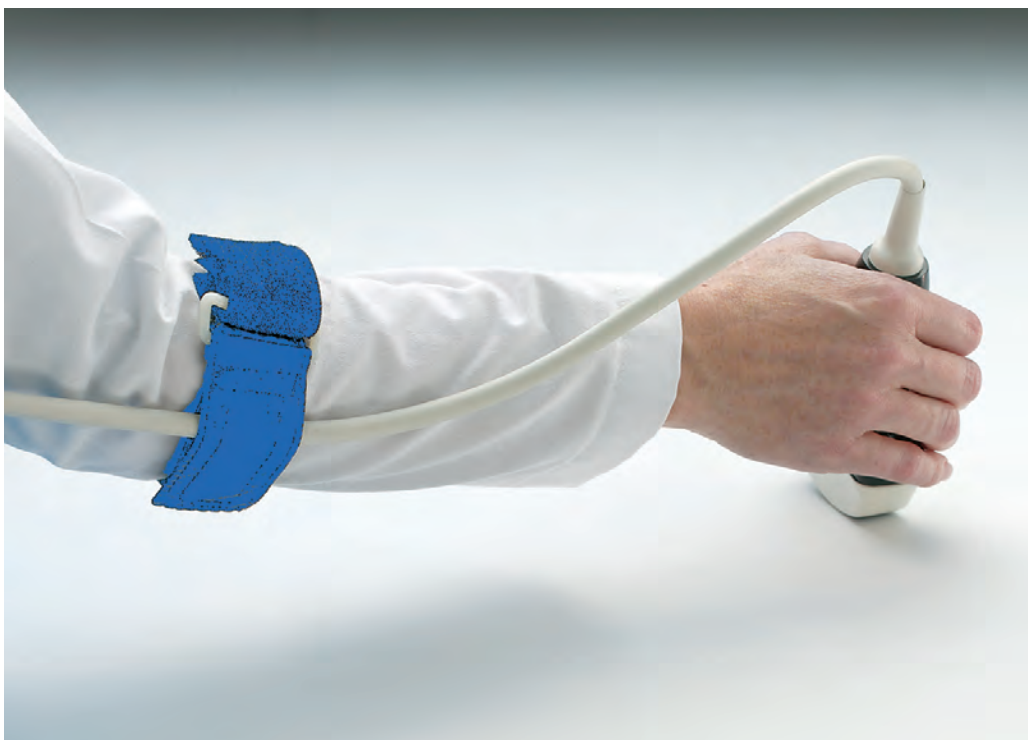
By Sound Ergonomics



Cable Brace

This unique product is to be used to hold & support the cable of ultrasound transducers, mammotome instruments, and other cabled hand tools. This easy to use device takes the strain off the operator's hand and forearm created by the torque of the instrument during use.

Wrap the strap snugly around the forearm near the elbow and fasten with the Velcro tabs. The brace can be worn over clothing or lab coats. While holding the instrument, place the cable under the small tubular tab on the arm strap and fasten the tab down. Adjust it so that the length of cable between the strap and your hand is sufficient to allow for comfortable use. Significantly reduce the effort required to manage the instrument with this simple device.



SNDCB2073 (One size fits all)

| Cat Number | Description | Unit |
|------------|--------------------------------------|------|
| SNDCB2073 | Cable Brace (Blue) one size fits all | Each |
| SND207359 | Large size cable brace | Each |

Advanced Ergonomics Package

Update or increase your ergonomic skills with the new Advanced Ergonomics Package.

Includes:

"Ergonomic Guidelines for Sonography". A valuable reference guide for sonographers includes guidelines for correct postural alignment, images of correct and incorrect postures, specifications for ancillary equipment and much more! Keep this important resource handy to as protection from occupational injury.

"Protecting Your Career: A Sonographer's Guide". A valuable 45 minute training video in reducing your risk for work related musculoskeletal disorder through modifications in exam technique and preventative maintenance exercise program. Sound Ergonomics, L.L.C. Injury Prevention Specialist Susan L. Murphey demonstrates how changes in exam technique can help you to avoid injury. See stretching exercises demonstrated by a guest fitness specialist and learn about the mechanism of injury from Sound Ergonomics' Joan P. Baker.

| Cat Number | Description | Unit |
|------------|---|------|
| SNDAEP2004 | DVD version of Advanced Ergonomic Package | Each |

Adaptive Support Cushions Set

Support Cushions are designed to support the scanning arm of Diagnostic Medical Sonographers. Experts agree that the prolonged abduction of the scanning arm contributes to the risk of work-related shoulder and neck injuries. These stackable, multi-use cushions provide muscle recovery opportunities for the Sonographer, or other professionals required to hold a fixed position during their work.



Recommended for practitioners whose services include obstetric/gynae ultrasound.



This set is recommended for practitioners whose services do not include obstetric/gynae ultrasound e.g., vascular, cardiac, general sonography, and invasive procedures.

| Cat Number | Description | Unit |
|------------|--|------|
| SNDC-2700 | Half roll and two rectangular modules (set of 3) | Each |
| SNDC-2796A | Two rectangular modules (set of 2) | Each |

HÅG Capisco Ergonomic Chair

Movement and variation makes you feel better both physically and mentally. This is why all HÅG chairs inspire you to move! Excellent for height adjustable work surfaces. Full adjustability. Adjusts to sitting and standing positions. HÅG Capisco allows more variation in seated posture than any other chair on the market, and is also the only chair that is equally comfortable at desk height and semi-standing height work surfaces. The HÅG Capisco is the perfect sitting solution for all sizes.



Health Benefits:

- The HÅG Capisco, like all HÅG chairs, features a centre tilt mechanism, which enables the feet to control movement and the shifting of body positions and increases blood circulation.
- The HÅG Capisco chair can be used as both a traditional chair and a sit stand stool. It reduces fatigue, and provides lower body support in a semi upright position.

Colour:

A152 Ocean (Blue) Cashmere



Material:

Vinyl



Standard Seating
Position



Sit Stand Position



Side Position



Backwards
Position

| Cat Number | Description | Unit |
|------------|--|------|
| SND8106 | HÅG Capisco ergonomic chair with stool kit | Each |

Wrist Support Braces

Support braces for the wrist can help alleviate the stress of extreme wrist flexion during scanning. However, it is important that the wrist brace be used as a tool to maintain a more neutral wrist posture, rather than as a leverage to obtain more force with flexion. Additionally, many have found that sleeping with wrist braces on helps to manage the symptoms of carpal tunnel syndrome. Wrist braces are available with multiple levels of support.



Features

- Flexible support and warmth for injured or arthritic wrist
- Hand washable
- Latex free
- One size fits all

| Cat Number | Description | Unit |
|-------------|-----------------------------|------|
| SNDC7804 | Wrist Support Brace (Blue) | Each |
| SNDC7804-01 | Wrist Support Brace (Black) | Each |

Ergonomic Kit for Sonographers

This kit offers important adaptive and training equipment for Sonographer Ergonomics. These items offer the Sonographer the opportunity to be proactive in reducing their risk for occupational injury. Complete instructions are included with each item.



Kit includes:

- Transducer cable brace-used to hold & support the transducer cable, thus taking the strain off the sonographer's hand and forearm from the torque of the transducer while scanning
- 11" x 17" laminated Exercise Poster demonstrates exercises designed specifically for Sonographers
- Exercise Tubing with door anchor and instructions for Sonographer Exercise Program (Pictured top left)
- Hand Strengthening Exercise Putty (with instructions) (Pictured bottom left)
- Pocket Exercises-for Preventative Maintenance Exercise Program

| Cat Number | Description | Unit |
|------------|---------------------------------|------|
| SNDSEK01 | Ergonomics kit for sonographers | Each |

The Bambach Saddle Seat

The Bambach Saddle Seat, as the name suggests, is shaped like a saddle to enable the body to maintain ideal posture when sitting.

The Bambach Saddle Seat has a tilt adjustment so that the seat can accommodate varying pelvic positions in order to achieve a comfortable natural spinal posture.

The Bambach Saddle Seat provides adjustments to allow each individual sitter to find a 'natural' comfortable spinal position.



Could you benefit from a Bambach Saddle Seat?

Benefits include:

- Relief from back pain
- Natural easy balance
- Improved circulation
- Hands and arms can reach freely and easily
- Close access to work surface
- An open chest and abdomen provide good function for digestion and breathing
- The 'open' position of the hips fosters good blood circulation
- Neutral position for the back, neck, head and shoulders
- Feeling of well being and energy at the end of the day
- Upright posture retaining natural spinal curves especially the lumbar curve



Features of all Bambach Saddle Seats

- Adjustable height
- Adjustable seat tilt
- Adjustable backrest
- A wide choice of castors for different floor types
- Available in different colours and fabrics
- Can be modified for children and adults with special needs
- 5 year manufacturers warranty
- Tested and approved to Australian standards for strength and durability by AFRDI to level 6



Standard Bambach Saddle Seat

Packed with all the features and benefits of all Bambach Saddle Seats, the standard model also comes in a small size which is adjustable for children.

| Catalogue Number | Description |
|------------------|-------------------------------|
| JCMBBSSNB | Saddle Seat - No Back |
| JCMBBSSWB | Saddle Seat - With Back |
| JCMBBSMSNB | Saddle Seat - Small No Back |
| JCMBBSMSWB | Saddle Seat - Small With Back |



Executive Bambach Saddle Seat

The Executive Saddle Seat can be purchased with or without a backrest on the seat and can be adjusted for height and angle.

The executive has been specially designed for men and larger framed people. The executive is also specific to those who are much taller and/or heavier and prefer the increased depth and width of the seat.

| Catalogue Number | Description |
|------------------|-----------------------------------|
| JCMBBESNB | Saddle Seat - Executive No Back |
| JCMBBEXB | Saddle Seat - Executive With Back |



Narrow Bambach Saddle Seat

The narrower version is available with or without a backrest. All the features relating to the Bambach Saddle Seat still apply.

The narrow Bambach Saddle Seat is best suited for women, and particularly those who have requirements to wear skirts.

| Catalogue Number | Description |
|------------------|--------------------------------|
| JCMBBNSNW | Saddle Seat - Narrow No Back |
| JCMBBNSWB | Saddle Seat - Narrow With Back |



Options for Bambach Saddle Seats include:

- Surgeons Height Adjustment
- Special vinyl/wool colour

Call our customer service on 1800 021 928 for more information.